

ENVIRONMENT SOLUTIONS



Discover
our solutions
in pictures

 **MANITOU**
HANDLING YOUR WORLD

ENVIRONMENT
SOLUTIONS

SUSTAINABLE PARTNER IN AN INNOVATING WORLD

For over 20 years, we know your industrial issues about safety, workflow management and productivity related to waste management, water treatment and renewable energy markets.

The Group researches, designs and manufactures a wide range of dedicated electric and combustion engine machines recognized for their reliability, performance and robustness. They prove themselves day after day in the most severe operating conditions... Yours.

Our network of 800 dealers and experts advises and provides you with local services essential to your business. These dedicated professionals provide the training, service (After Sales) and maintenance. They will also provide financing solutions to help you carry out your investment.

With lifting capacities from 0,5 to 22.5 tons (t) (1100 to 49,600 pounds (lbs.)) and working heights up to 40 meters (m) (131'), Manitou Group has the solution for your business and brings answers to your issues.





ENVIRONMENT
SOLUTIONS

WASTE MANAGEMENT

Want to combine performance and safety?

Every day you need to transport and handle, on industrial floors and off-road, in confined spaces, in dusty or dangerous environments; large volumes of waste.

Your bulky or packaged materials with densities from 300 to 1800 kg/m³ (661 lbs to 3,968 lbs/sq.ft), bulk or packaged, are varied.

Your sustained pace requires a secure handling solution with optimum comfort for your operators and total control over your working environment.





Work fast with confidence

We optimize your productivity with a wide range of dedicated attachments and options: buckets, clamps, grapples, rotators, onboard weighing...

Manitou Group machines are designed to be versatile. Our priority is to optimize your total cost of ownership and energy efficiency. Movement speed, rapid cycles and the performance of our trucks bring you a quick return on investment.



A range of devices to secure your operations

- reversing cameras
- cabin pressurization
- presence detector placed in the seat
- easy step
- windshield grills, working and road lights

ENVIRONMENT
SOLUTIONS

WATER TREATMENT



Want to gain in fluidity?

During the construction and maintenance of your infrastructure, you must alternate from working at heights, to handling, to storage or even disposal.

Downtime is not acceptable. Your facilities require daily cleaning.





With our solutions, it is crystal clear!

Specific attachments, quick and easy to set up such as platforms, jibs, sweepers and pickers will help reinforce the versatility of our machines.

3 in 1 machines such as our rotating telehandler (genuine crane, telehandler and platform all at the same time) make your life easier.

Check out our latest releases in the warehousing range; the design, ergonomics and efficiency of the trucks will change your life.

Manitou, a partner you can rely on

With you, we develop the solutions that will facilitate your daily work. Your dealer is your specialized advisor who is there to answer your questions, to advise you in the long term; he is the local contact that will guide you to help define, finance and maintain your machines.

You can count on our network on a daily basis. Our after-sales technicians intervene as soon as possible to guarantee the continued performance of your equipment.

ENVIRONMENT
SOLUTIONS

RENEWABLE ENERGY

Want to renew your way of working?

In biogas and biomass: loading and filling shredders, hoppers and articulated lorries are intensive and repetitive jobs.

In order to load and unload bulk products; precision and reliability are the key words.

From initial construction to rough everyday maintenance and the cleaning of your solar installation, the intervention heights and the bulky loads are your daily challenges...





For us, it is obvious!

Our robust machines, manufactured with quality components are your production tool in biogas and biomass.

For even more reliability, we protect all critical components: engine, steering, transmission and hydraulics.

The wide list of dedicated attachments (large volume bucket, grapple bucket...) and the capacity of our telehandlers from 2.5 to 22.5 t (5,500 to 49,600 lbs.) provide you with the best productivity.

In the solar panel market, our platforms from 6 to 28 m (20' to 92'), and our fixed and rotating telehandlers from 6 to 30 m (20' to 100') are safe and easy to operate.

You can combine any of the essential attachments to suit your business requirements: basket, brush, winch...



We have the solution!

Your business is constantly changing. Our R&D department, comprising of more than 200 engineers and technicians, put all their energy and creativity into developing new solutions.

Manitou Group has built its reputation on flexibility and on the ability to customize our machines according to your needs.

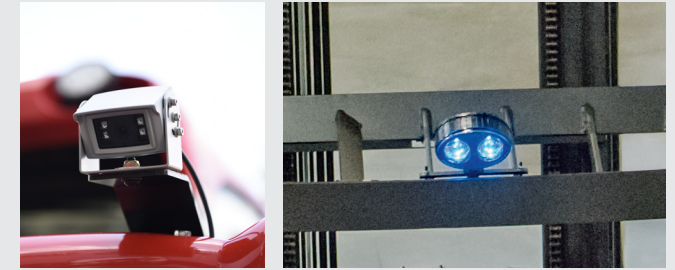
ENVIRONMENT
SOLUTIONS

OUR CUSTOMS SOLUTIONS



Personnel protection

- protection grids (windshield, roof, working and road lights)
- pressurized cabin (asbestos and amonia)
- Lynx cry audio warning



Ergonomics, visibility

- camera system (machine sides + boom head)
- pedestrian detection camera
- LED lights
- blue spot
- panoramic mirror
- blades of the roof grid



Access

- easy access to the cabin
- yellow painted steps and handle
- machine start-up by keyboard



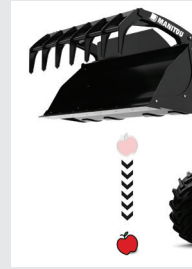
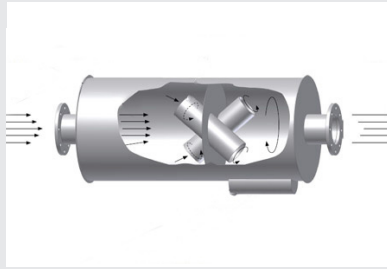
Fire prevention and control

- fire extinguishers
- fire prevention system in the engine compartment



Electrical / thermal / hydraulic protection

- chassis
- starting battery cut-off
- exhaust pipe
- hydraulic connections boom head
- hydraulic hoses above the boom



Environmentally friendly

- timed engine shutdown
- self-cleaning air filter
- spark arrester

Performance

- regenerative hydraulics
- 3 automated hydraulic functions
- speed limitation
- centralized and automatic lubrication



Our little extras

- connected machines
- industrial profile and/or bladed tires
- anti-puncture liquid
- on-board weighing with or without printer
- directional joystick



ENVIRONMENT
SOLUTIONS

SELECTIONS OF ATTACHMENTS

Manitou telehandlers are truly adaptable tool carriers, as the specially designed attachments can easily be added depending on your needs. We have a range of Manitou approved attachments that are fully compatible with our machines.

A quick and easy coupling system

In order to save you time, the coupling system for Manitou attachments (TS: simple fork carriage with manual or hydraulic locking) is reliable, quick and easy to use. Attach and detach attachments with ease.



Big Bag Handling

Simple and efficient solutions for big bag handling



Loading of waste and bulk

Wide choice of large capacity buckets or grapples specially developed for loading bulky or bulk materials



Bale handling / household appliances

Solutions for handling and storing all types of materials: bales, household appliances, drums



Site maintenance

Complete range of baskets specially designed for deconstruction applications (asbestos removal)



Handling of suspended loads

Wide range of jibs, hooks and hydraulic winches



General handling

Simple and efficient solutions for handling palletized and non-palletized loads



Maintenance

Sweeping and washing solutions for the maintenance of your operation



Discover all
our attachments on
manitou.com

ENVIRONMENT
SOLUTIONS

OUR ENVIRONMENT SOLUTIONS

For a year-round environment solution,
Manitou offers a wide range of products
and services to suit all your needs.

**MLA-T
533**
5 m / 3,3 t



1350 R
2,78 m / 600 kg

3300 V
4,37 m / 1500 kg



MLT 961
9 m / 6 t

MLT 850
8 m / 5 t

MLT 841
8 m / 4,1 t

MLT 741
7 m / 4,1 t

MLT 737
7 m / 3,7 t

MLT 733
7 m / 3,3 t

MLT 635
6 m / 3,5 t

MLT 625
6 m / 2,5 t



Click on one
of these QR codes to get
technical data

170 AETJ
17 m

150 AETJ
15 m

100 VJR
10 m

80 VJR
8 m

160 ATJ-E
16 m

180 ATJ-E
18 m

200 ATJ-E
20 m

MI50
5 t
3 to 6 m

MI40
4 t
3 to 6 m

MI35
3,5 t
3 to 6 m

MI30
3 t
3 to 6 m

MI25
2,5 t
3 to 6 m



ENVIRONMENT
SOLUTIONS

IMPROVED PRODUCTIVITY, CONTROLLED CONSUMPTION



Extended engine life!

The "automatic radiator dust removal" feature reverses the air flow every three minutes (for 15 seconds) regardless of the engine speed. Cooling is always optimal, especially in environments that are conducive to clogging, containing dust, straw or silage.



Eco* mode

The engine speed is optimized while guaranteeing high performances. Fuel consumption and sound pollution are greatly reduced.

* Standard with M-Vario Plus transmission.



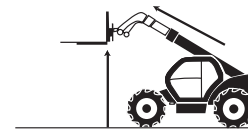
Machine designed for dusty environments



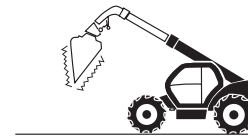
Let the machine help you!

The Intelligent Hydraulics* solution automates certain hydraulic functions and reduces fatigue linked to repetitive movements. It consists of three functions:

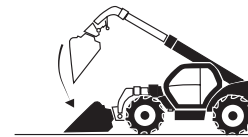
*standard or optional, depending on the level of finish.



- “Quick Lift”: automatically allows two simultaneous movements (raising/lowering + extension/retraction) and facilitates stacking operations.



- “Bucket Shaker”: quickly empties the bucket without requiring the operator to make repetitive movements. Manure will no longer stick to the bottom of the bucket.



- Automatic “Return to Load”: to return easily to a position (attachment and boom) pre-determined by the operator. This function is particularly useful for loading operations.



Reduce the number of steering wheel turns by 40%

During intensive loading operations, an operator makes more than 3000 steering wheel turns per day. That can cause fatigue, or even injury.

The Comfort Steering System (CSS)*, patented by Manitou, adjusts the level of assistance according to machine speed and boom angle.

ENVIRONMENT
SOLUTIONS

OUR COMMITMENT REDUCE YOUR TCO*

Our teams are committed to providing innovative solutions and continuous improvements to reduce the total cost of ownership of your machine*.

Let the machine take care of the lubrication

The Automatic Lubrication System option eliminates manual lubrication operations and ensures optimal lubrication of critical components (cylinders, booms, decks, etc.), thus optimizing machine availability.

Reduce your consumption

The Stop & Start option provides substantial savings by automatically shutting off the engine when it is idling, without a driver in the telescopic handler.



Discover
the video
of our
innovation



Dealer Network

A network of experts at your service,
wherever you are.



Service contracts

3 levels of contracts that provide
maintenance anywhere in the world.
Entrust the maintenance of your equipment
to your dealer.



Maintenance and repair

Minimize downtime, get expert advice
and trust qualified professionals to maintain
and repair your equipment.



Customized Financing

Buy or lease? Everything is included for the life of your equipment, with no hidden costs and a single point of contact.



Original spare parts

Guaranteed performance and reliability. Ask for original spare parts and maximize the life of your machine and its resale price.



Extended coverage

Protect your business from unexpected and out-of-budget expenses. Get full coverage for parts and labor for up to 6 years or €6,000.



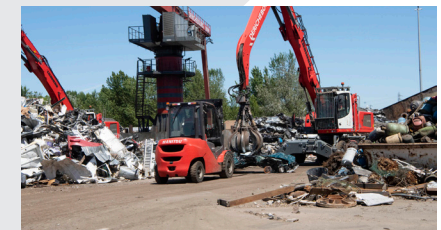
Connected machines

This fleet management solution gives you real-time access to your machines' technical information from anywhere at any time. Secure your machine with an access control keypad. Safety first!



All the info on the QR code of my machine

What could be easier than scanning a QR code to find my machine's standard documentation in my preferred language?



Your dealer:



B.P. 10249 - 430 rue de l'Aubinière - 44158 Ancenis Cedex - France
Tél. : +33 (0)2 40 09 10 11 - Fax : +33 (0)2 40 83 36 88 - Email : environnement@manitou-group.com
www.manitou.com

This publication describes the versions and configuration possibilities of Manitou products which may differ in equipment.

The equipment shown in this brochure may be standard, optional or not available depending on the version.

Manitou reserves the right to change the specifications described and shown at any time without notice. The specifications shown are not binding on the manufacturer.

For more details, contact your Manitou dealer. Non contractual document. The logos and visuals of the company are the property of Manitou and may not be used without permission.

All rights reserved. The photos and diagrams contained in this brochure are provided for reference purposes only.

Manitou BF SA - Public limited company with a Board of Directors - Share capital: 39,547,824 euros - 857 802 508 RCS Nantes - ©Manitou ©Adobe stock